

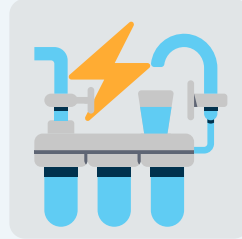
Keep your home and property safe in extreme cold and winter storms



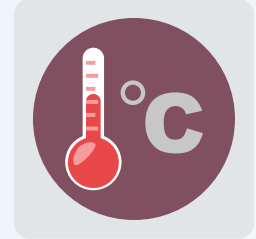
Have reliable backup generation with a portable generator



Have a powerless heating source like a fireplace or stove



Consider back-up generation for private and shared wells



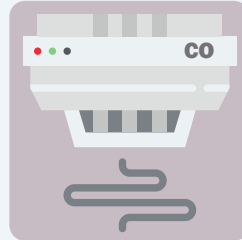
Heat your house to a minimum of 18 degrees



Keep one room warm in a power outage



Monitor your fireplace, wood stove and space heaters closely



Have a working carbon monoxide detector



Keep the fireplace flu shut while you're not using it



Open and let faucets drip slowly to prevent pipes from freezing



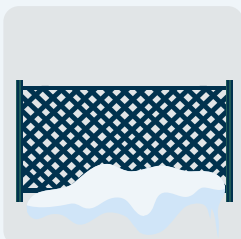
Break up ice and snow near drainage areas



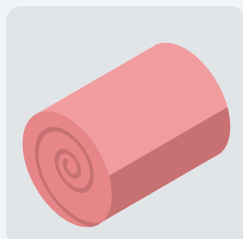
Clear paths and entrances from snow and ice



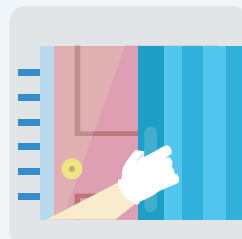
Keep your garage door shut



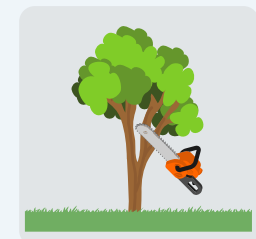
Install snow fences to reduce drifting snow



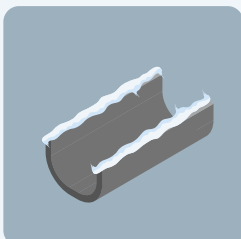
Insulate your attic to prevent snowmelt, ice damming and roof damage



Install storm shutters



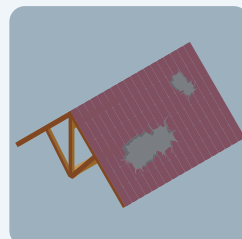
Prune dangerous tree branches that could fall under snow and ice weight



Clear eaves troughs to prevent ice damming and water damage



Treat ice damming with a chemical de-icer or de-icing cables



Check for roof damage



Use a snow rake to prevent roof collapse