

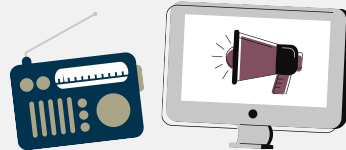
# SEVERE WINTER WEATHER ALERTS IN ALBERTA



Prepare yourself for Alberta's cold and severe winters by learning how to find information on winter weather alerts and what each alert means.

**Environment Canada** issues alerts whenever severe winter weather is expected or currently happening. Visit their [Public Weather Alerts site](#) for the latest updates.

Instructions about how to stay safe will come from multiple official sources—listen to your community leaders and the radio, watch your local news channels, and follow your local news outlet and/or emergency officials on social media.




**PREPAREDNESS TIP:** Keep a battery-powered or wind-up radio in your home so you can stay up-to-date in the case of a power outage.

## What's the difference between a winter storm warning alert and a winter storm watch alert?

Winter storm alerts are issued when multiple types of severe winter weather are expected to occur together.



 511 Alberta is a reliable source for information about road conditions.

## COLD ALERTS

**Extreme cold:** The temperature or wind chill is expected to reach minus 40°C for at least two hours.

**Flash freeze:** Significant ice is expected to form on roads, sidewalks or other surfaces because of the freezing of water from melted snow or rain due to a rapid drop in temperature.

## POOR VISIBILITY ALERTS

**Blowing snow:** Gusting snow, caused by winds of at least 30 km/h, is expected to reduce visibility to 800 metres or less for at least 3 hours.

**Blizzard:** Winds are expected to create blowing snow, giving widespread reduced visibility of 400 metres or less.

## PRECIPITATION ALERTS

**Snowfall:** Significant snowfall; 10 cm or more will fall within 12 hours or less.

**Snow squall:** Cold air moving across larger open bodies of water creates nearly stationary bands of cloud and snow.

**Freezing rain/freezing drizzle:** Freezing precipitation poses a hazard to transportation or property; or when freezing rain is expected for at least two hours.

**Winter storm:** Multiple types of severe winter weather are expected to occur together.



[www.resilientrurals.com](http://www.resilientrurals.com)

