



2023

Resilient Rurals

RURAL READY PROGRAM GUIDE

*Mock emergency scenarios
for community preparedness*



About Rural Ready

The *Rural Ready Program Guide* is a resource designed to help rural communities, including those in Alberta's Industrial Heartland Region, and any other community interested in emergency preparedness, to prepare their residents, municipal employees, and local business community for emergency events. It includes a series of mock scenario templates, such as wildfires, freezing rainstorms, and loss of critical files, to simplify the delivery of scenarios that are tailored to meet the specific needs of your community. The guide provides step-by-step instructions on selecting a platform for scenario delivery, determining target participant groups, and offers recommendations for pre-notification and follow-up procedures to ensure the successful execution of the program.

The value of mock scenarios

Like a fire drill or lockdown, conducting mock emergency event scenarios throughout the year can prepare a community to expect the unexpected. Mock scenarios are a proactive measure communities can take to increase their level of emergency awareness and preparedness, as well as build capacity for resilience if an emergency were to ever occur.

Table of Contents

2 Recommended Mock Scenarios for the Industrial Heartland Region

3 Target Participant Groups

- Municipal Employees - All departments
- Business Community - Including home-based businesses
- Residents - Single-person households, multi-person households, and families
- What level of participation are we looking for?

5 Recommended Procedures

- Platform Selection
- Pre-Scenario Notification
- Conducting the Scenario
- Follow-Up for the Mock Scenario

8 Mock Scenario Templates - High Priority Climate Events

- Evacuation for Wildfire or Flood (Multi-Part Alert)
- Municipal Office Burns Down
- Fire in the Community
- Dangerous and Damaging Air Quality
- Water Supply Shortage
- Freezing Rain
- Extreme Windstorm

13 Mock Scenario Templates - Isolated Technological Events

- Shelter in Place (Train Derailment)
- Information and Security Breach
- Loss of Cellular and Internet Service
- Potential Water Supply Contamination

15 APPENDIX: Potential local risks for Bruderheim and the Industrial Heartland Region



Recommended Mock Scenarios for the Industrial Heartland Region

High priority climate events

During the 2016 Climate Resilience Express Workshop with the Town of Bruderheim and All One Sky Foundation, five climate events were determined to be of higher priority within the Heartland Region to prepare for due to the severity of their consequences and the likelihood of an event occurring in the region. These events, and their associated consequences, are the focus of the *Rural Ready* mock scenarios. Refer to the Appendix for the complete list of the climate events and hazards that were defined in the 2016 workshop.

Isolated technological events

Specific technological events were highlighted as a concern for the town and region, particularly for the risks they pose to business continuity for local business owners and municipal operations. Isolated technological events like a breach of security for municipal systems or a cell and internet service failure similar to the 2022 Rogers outage could severely impact the continuity of operations.

High Priority Climate Event	Consequences
<p>Wildfire</p>	<ul style="list-style-type: none"> • Evacuation and displacement • Poor air quality • Power outage • Loss/damage of critical structures • Loss of critical records • Insurance costs • Dangerous and damaging air quality
<p>Water supply shortage</p>	<ul style="list-style-type: none"> • Stress on municipal water supply infrastructure • Increasing landscaping costs • Competing demands between residents, businesses, and town operations
<p>Flooding</p>	<ul style="list-style-type: none"> • Evacuation and displacement • Damage to critical structures • Loss of critical records • Power outage • Insurance costs • Infrastructure failure • Water contamination or disruption to supply • Road closures
<p>Freezing rain/ice storm</p>	<ul style="list-style-type: none"> • Power outages • Dangerous roads • Increased road maintenance • Injury and accidents
<p>Windstorm</p>	<ul style="list-style-type: none"> • Property damage • Power outage

Isolated Technological Events

Security and Information Breach

Loss of cellular and/or internet service

Train derailment

Potential Water Supply Contamination

Target Participant Groups

Mock scenarios can help everyone in a community start thinking more critically about what an emergency event could mean for them, their work, their business and their families.

Community-wide alerts can be invaluable for capturing as many people as possible, but at times, it will be beneficial to limit a scenario to specific sub-groups. By determining the scope of participation, the mock emergency event can be either more specific or more general, depending on the goals you want to accomplish by running the scenario.

Municipal Employees - all departments

Limiting a mock scenario drill to municipal employees provides flexibility in terms of participation, where it can either be mandatory or optional. The scenario prompts can be structured in a way that requires the employees to take tangible actions or serve as a brainstorming or thought exercise to help them personalize the implications of the emergency to their specific roles



Business Community - Including home-based businesses

Focusing a mock scenario drill on the local business community can be an effective way to support your businesses and promote economic resilience. By offering opt-in scenarios that are tailored to their specific needs, businesses can be better prepared for emergencies. For instance, the scenarios could include questions about the preparation of critical documents, key contacts, and the continuity of necessary functions

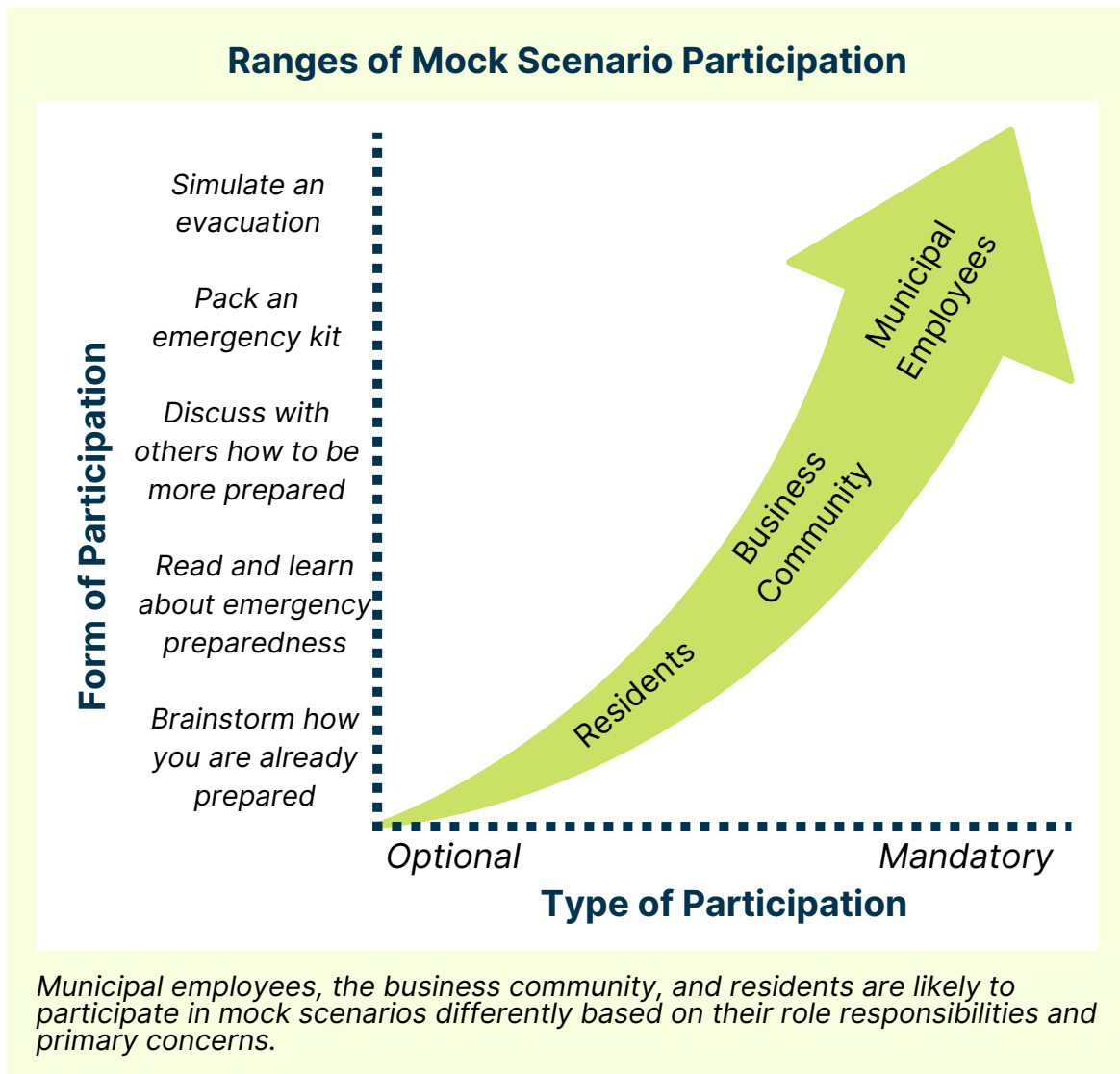
Residents - Single-person households, multi-person households, and families

A mock scenario drill that involves the entire community can capture the participation of most municipal employees and members of the local business community. By offering opt-in scenarios that are designed to increase awareness of various elements of emergency preparedness, residents can benefit from the exercise as well. While active participation in the drill is not mandatory, residents can think through the scenario prompts and mentally prepare for potential emergencies.

What level of participation are we looking for?

Unlike real emergency events, mock scenarios do not necessarily require participants to leap into action. In some cases, they can inspire action—like calling a mandatory drill for employees or running a training scenario on-site. Overall, the goal of a scenario is to sharpen a person's ability to personalize the potential impacts of an event, so they know exactly what they would have to do in a real-life circumstance. Personalization exercises can certainly be achieved through active participation, but brainstorming, reflection and conversation are also effective, and sometimes more reasonable to expect from participants.

Participation in a mock scenario can vary based on individual circumstances. For instance, a municipal office may allocate time for employees to solely focus on the scenario, while a single mother of two children may only have a few moments to consider how to prepare for an event. Likewise, someone with a stake in a business may choose to participate actively or opt for brainstorming, depending on the scenario's content and the level of impact it could have on their business.



Recommended Procedure

In order for *Rural Ready* mock scenarios to be valuable and receive a high rate of participation from the community, **we recommend the following:**

1. Determine your goals and target participants
2. Select/design your scenario to suit your goals and participant needs
3. Select your platform to reach your target participants
4. Notify your target participant group about the mock scenario ahead of time
5. Conduct the scenario; make it specific and engaging
6. Follow up after the scenario to gauge value and participation

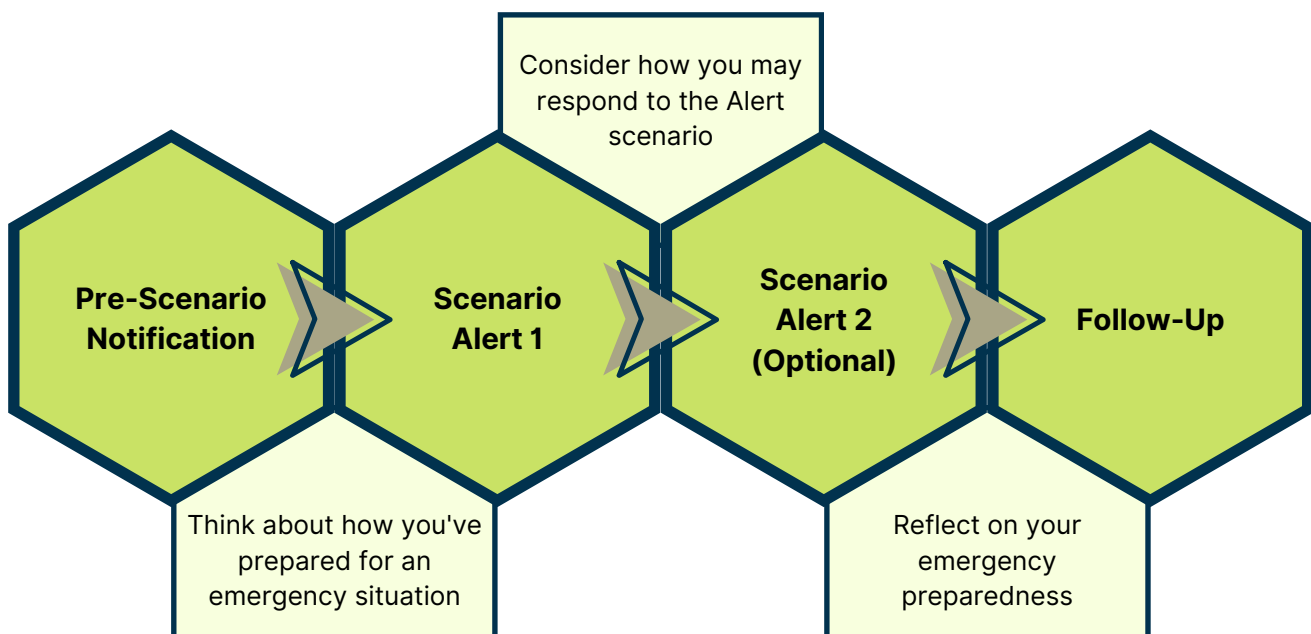
Platform selection

If you are looking to conduct a community-wide scenario, utilizing an emergency alert platform or municipal information app is an excellent choice. These platforms provide residents with a reliable and effective means of receiving alerts and notifications, and many may already be registered with and/or aware of it.

If you want to target local businesses, consider reaching out to them directly to obtain their contact information for a *Rural Ready* contact list. Additionally, if your community has a chamber of commerce, partnering with them can help spread the word about *Rural Ready* and the program's benefits.

Staff email lists, staff portals, all-staff meetings or any other platform used for internal employee communications are ideal for reaching municipal staff members.

Mock Scenario Process - Participant Experience



Pre-Scenario Notification

To prevent the possibility of a mock scenario being mistaken for a real emergency event, it can be beneficial to schedule and send a notification to your target participants a few days before the main alert. This notification will prepare participants for the mock scenario and improve the likelihood of successful participation on the day of the alert. By providing advance notice, participants can better accommodate the scenario and alleviate some of the stress associated with emergency alerts.

Example notification message:

UPCOMING MOCK EMERGENCY SCENARIO FOR [COMMUNITY] ON [DATE]

Please be advised you will receive a *Rural Ready* mock scenario alert on this device on [date].

The scenario will be designed for [target participants] to [goals]. You are invited to participate in the scenario by reading its prompts and considering how you may be impacted and take action. Consider turning it into a discussion with your family, friends, or co-workers.

Mock scenarios help communities prepare for potentially disastrous events that could impact their health, safety, business continuity, and municipal operations.

Please take some time prior to the scenario to determine how you, your family, and/or your business are prepared for the impacts of a potential emergency event.



Conducting the Scenario - Sending the Alert

The goal of any mock scenario is to create a realistic and engaging experience that simulates the challenges people may face during an actual emergency, encouraging participants to think critically about their preparedness and take any necessary steps to improve it.

Note: Alert templates for mock scenarios for each of the high priority climate events and isolated technological events are available on pages 8 - 13 of the guide.

When designing mock scenarios, there are several considerations to keep in mind:

Remind people one more time: Even with a pre-notification, it's important to make it clear and obvious in your day-of message that this is an exercise. Use statements that either tell alert recipients that this is a mock scenario, or a drill, and remind them why they are receiving the message in the first place (e.g, they've opted-in, this is mandatory for staff)

Specificity: Begin with a specific description of the situation that includes relevant landmarks, roads, and buildings in the community. This approach helps participants orient themselves and personalize the potential impacts of the scenario.

Prompting Questions: Including prompting questions that reflect key considerations for the type of event can aid in conversations, brainstorming, and/or action-taking among participants.

Consider Multi-Part Scenarios: For complex emergencies and disaster situations, it can be effective to create multi-part scenarios and send out subsequent alerts with updates to the situation. This approach allows for the simulation of the evolving nature of emergencies, making the scenario more realistic and engaging for participants.

Follow-Up for the Mock Scenario

Sending a completion message after conducting your mock scenario can help reinforce the learning and preparedness of your participant group. In this message, you can emphasize how mock scenarios provide valuable learning opportunities for individuals and communities. You can also share additional preparedness resources or information to help participants further develop their emergency plans.

Additionally, your message can prompt participants to reflect on their experience and consider areas where they may need to improve their preparedness. Encouraging participants to take action based on what they learned from the scenario can help increase community resilience and preparedness in the long run.

CONGRATULATIONS ON COMPLETING [X] MOCK EVENT

We hope you found the *Rural Ready* [mock event type] helpful and that the scenario highlighted some of the areas where your emergency preparedness is strong, as well as areas for improvement.

If you would like, please use this link to fill out a brief form about your emergency preparedness strengths, and what improvements you could make to your response in the future.

[Insert Follow-Up Form Link Here](#)



Follow-Up Form

Consider including a link to a follow-up form you've created to gather feedback from participants as well as ask questions to reinforce the exercise's take-aways.

The form doesn't need to be long, but here are some potential questions that could be included:

- Did you feel prepared to handle an emergency like today's scenario?
- What could you do to improve on/plan for to handle an emergency like today's scenario?
- Did you encounter any challenges or obstacles during the scenario?
- Did you learn something new during the scenario?
- Did you communicate effectively with others during the scenario?
- Were there any communication breakdowns or misunderstandings during the scenario?
- Did you have all the resources and information you needed during the scenario?
- Was the scenario realistic and relevant to your community?
- How could the scenario be improved for future drills?
- Would you be interested in participating in future mock scenarios?
- Did you find the scenario helpful in improving your emergency preparedness?

Mock Scenario Templates: High Priority Climate Events

Evacuation for Wildfire or Flood (Multi-Part Alert)

Target Participant Groups: Town-wide - Residents, business community, municipal employees

Particularly in recent years, Albertan springs and summers, and the lives of rural and urban residents alike have been shaped by fire and flood. The year 2013 was a particularly damaging year for flood in southern Alberta, with the damage costing about \$6 billion. By June of the 2023 wildfire season, nearly 30,000 Albertans had been ordered to evacuate their communities. While novel and unprecedented, these extraordinary events will not be uncommon from this point forward. The time to prepare is now.

PRIMARY ALERT: Flood or Fire

RURAL READY MOCK EMERGENCY SCENARIO: WILDFIRE OR FLOOD EVACUATION

You are receiving this notification because you have opted in to Rural Ready, which is designed to promote emergency preparedness. THIS IS NOT AN EMERGENCY.

Situation: [Describe the situation - where is the source of fire or flood?] All residents are required to evacuate via highway X within 2 hours. Please secure your residence/business for immediate evacuation. Prepare/collect your emergency preparedness kit.

What to consider as a resident:

- Do I have an understanding of what is required during an evacuation?
- Do I have a plan for evacuation and an emergency preparedness kit in place?
- Do I have a vehicle to evacuate myself and my loved ones, and/or important items?
- Do I have a communications plan in place with my family to stay in touch if we are forced to evacuate separately?
- Does my child's school or day care have a communications plan for an evacuation scenario?
- Do I know someone who would be able to help me evacuate or who I should assist?
- What are the critical items and documents I would need to take with me?
- Do I know where and how I can receive updates about returning to town or emergency shelters?

What to consider as a business owner:

- Do I have an understanding of what is required for my business during an evacuation?
- Do I have a plan for evacuation for my staff and an emergency preparedness kit in place?
- What roles would my different staff members play in the event of an evacuation?
- How would I support my staff in the event of an evacuation?
- Do I have a vehicle to evacuate myself and my staff, and/or important items?
- What are the critical procedures I would require to secure my business for an evacuation order?
- What critical items and documents would I need to take with me?
- Do I know where and how I can receive updates about returning to town or emergency shelters?

What to consider as a municipal staff member:

- Do I have an understanding of what is required for my community during an evacuation?
- Does my community have a plan for evacuation and an emergency preparedness kit in place?
- Do I understand what my role would be as a municipal staff member in the event of an evacuation?
- Do I have a vehicle to evacuate myself and my staff, and/or important items?
- What are the critical procedures I would require to secure my department for an evacuation order and to ensure business continuity?
- What critical items and documents would I need to take with me?
- Do I know where and how I can receive updates about returning to town or emergency shelters?

Reply YES to this notification when you have completed the above steps.

Note: You are not required to follow through with evacuation procedures. However, this is an opportunity to consider the steps you would take in the event of an emergency requiring an evacuation.

High Priority Climate Events cont.

SECONDARY ALERT: Fire

RURAL READY MOCK EMERGENCY SCENARIO: WILDFIRE EVACUATION UPDATE

You are receiving this notification because you have opted into *Rural Ready*, which is designed to promote emergency preparedness. THIS IS NOT AN EMERGENCY.

Updated situation: Due to a shift in wind direction from X to X, the wildfire is now approaching from X direction, and evacuation via highway X is no longer safe. Please be prepared to evacuate using this alternate route: _____ within 30 minutes.

What to consider:

- Am I prepared to evacuate within 30 minutes?
- Has this change in evacuation routes impacted my evacuation plan and/or capabilities?
- Should I be concerned about wildfire smoke?

Reply YES to this notification when you have completed the above steps.

Note: You are receiving this notification because you have opted in to *Rural Ready*, which is designed to promote emergency preparedness. You are not required to follow through with evacuation procedures. However, this is an opportunity to consider the steps you would take in the event of an emergency.

SECONDARY ALERT: Flood

RURAL READY MOCK EMERGENCY SCENARIO: FLOOD EVACUATION UPDATE

You are receiving this notification because you have opted into *Rural Ready*, which is designed to promote emergency preparedness. THIS IS NOT AN EMERGENCY.

Updated situation: Floodwaters near Tervita Waste and Industrial Services have resulted in a halt in operations and severe contamination of floodwaters. Tap water is no longer safe for consumption.

What to consider:

- Do I have enough drinking water to support myself through a 72-hour emergency event?
- Do I or someone I care for need water to operate equipment?
 - Is our household registered as a vulnerable customer with our utility company?

Reply YES to this notification when you have completed the above steps.

Note: You are receiving this notification because you have opted into *Rural Ready*, which is designed to promote emergency preparedness. You are not required to follow through with evacuation procedures. However, this is an opportunity to consider the steps you would take in the event of an emergency.

Municipal Office Burns Down

Target Participant Groups: Municipal employees

RURAL READY MOCK EMERGENCY SCENARIO: THE TOWN OFFICE IS SEVERELY DAMAGED

You are receiving this notification because you have opted into *Rural Ready*, which is designed to promote emergency preparedness. THIS IS NOT AN EMERGENCY/

Situation: The Town Office has been severely damaged due to a fire. Please avoid the town office area, as emergency responders address the situation.

What to consider:

- Did I have important documents that were kept at the town office/by town officials?
 - Do I have copies of these important documents?
- Are my services directly impacted by the loss of Town Office resources and capabilities?

Reply YES to this notification when you have completed the above steps.

Note: You are not required to follow through with emergency response procedures. However, this is an opportunity to consider the steps you would take in the event of an emergency. No immediate action is required at this point.

High Priority Climate Events cont.

Fire in the Community

Target Participant Groups: Business community

RURAL READY MOCK EMERGENCY SCENARIO: FIRE THREAT TO YOUR BUSINESS

You are receiving this notification because you have opted into *Rural Ready*, which is designed to promote emergency preparedness. THIS IS NOT AN EMERGENCY.

Situation: There has been a fire in the community and it spread to the property your business sits on. The fire was contained and extinguished, but your building has been partially damaged. You are unsure of the full extent of the damages, but know that some things have been lost in the flames.

What to consider:

- Do I have a copy of my business registration off-site or in a cloud server?
 - What other critical files might I need copies of?
- Do I have employees I need to contact?
 - What role will they play in this situation?
- What functions of my typical role would require completion even during an emergency. (i.e., payroll)
- Who are my go-to contacts for an emergency? Do I have them accessible?
- What is my insurance policy for an event like this?

Reply YES to this notification when you have completed the above steps.

Note: This is an opportunity to consider the steps you would take in the event of an emergency. No further action is required at this point.

Dangerous and Damaging Air Quality

Target Participant Groups: Town-wide - Residents, business community, municipal employees

RURAL READY MOCK EMERGENCY SCENARIO: DANGEROUS AND DAMAGING AIR QUALITY

You are receiving this notification because you have opted into *Rural Ready*, which is designed to promote emergency preparedness. THIS IS NOT AN EMERGENCY.

Situation: A special air quality statement has been issued for the region. The Air Quality Health Index is reading as 10+ due to particulates in the air from a series of wildfires in the province. One hour spent outside breathing the air is equivalent to smoking 14 cigarettes.

What to consider:

- How will I protect myself and my family, especially children, infants and those with lung conditions, from inhaling this damaging air?
 - What outdoor activities can you limit or what modifications can you make to your activities?
 - Do you have N95 masks to wear if you must be outside?
 - How can you keep this air from entering your home/business/vehicle?
- If you have lung issues: do you have an adequate supply of prescription medications or equipment to manage multiple days of dangerous air quality?

Reply YES to this notification when you have completed the above steps.

Note: You are not required to take direct action. However, this is an opportunity to consider the steps you would take in the event of an emergency.

High Priority Climate Events cont.

Water Supply Shortage

Target Participant Groups: Town-wide - Residents, business community, municipal employees

RURAL READY MOCK EMERGENCY SCENARIO: WATER SUPPLY SHORTAGE FOR THE REGION

You are receiving this notification because you have opted in to *Rural Ready*, which is designed to promote emergency preparedness. THIS IS NOT AN EMERGENCY

Situation: A dry summer has led to severe drought conditions throughout Alberta, including the Industrial Heartland Region. In an effort to preserve what's left of the water supply, a water ban has been called for your community.

What to consider:

- What are some of the ways I can reduce my water usage during this period?
- What am I sacrificing by reducing my water usage?
- Who will I help by reducing my water usage?
- What local industries will be strained by this water shortage?
- Do I work at a business that requires a regular supply of water to do required tasks/deliver services?
- Do I need water to manage a medical condition/run medical equipment?

Reply YES to this notification when you have completed the above steps.

Note: This is an opportunity to consider the steps you would take in the event of an emergency like a drought and water ban.

Freezing Rain

Target Participant Groups: Town-wide - Residents, business community, municipal employees

RURAL READY MOCK EMERGENCY SCENARIO: FREEZING RAIN

You are receiving this notification because you have opted in to *Rural Ready*, which is designed to promote emergency preparedness. THIS IS NOT AN EMERGENCY.

Situation: Freezing rain fell across the region overnight. This morning, highways, roads, sidewalks, and parking lots throughout the county are icy and dangerous to navigate.

What to consider:

- Am I able to postpone travel today for the next few hours?
- If I have to travel, how could I go about it safely?
 - Do I have an emergency kit in my vehicle just in case? What should I bring?
- Is there anyone I should warn about the freezing rain immediately?
- If the power were to go down because of the ice, how would I be affected?

Reply YES to this notification when you have completed the above steps.

Note: This is an opportunity to consider the steps you would take in the event of an emergency like a freezing rain event or ice storm, no immediate action is required.

High Priority Climate Events cont.

Extreme Windstorm

Target Participant Groups: Town-wide - Residents, business community, municipal employees

RURAL READY MOCK EMERGENCY SCENARIO: EXTREME WIND STORM IN THE REGION

You are receiving this notification because you have opted into Rural Ready, which is designed to promote emergency preparedness. THIS IS NOT AN EMERGENCY.

Situation: The region is currently experiencing high winds of 90km/h with gusts over 105km/h in some areas.

What to consider:

- Am I outdoors right now? Should I be finding shelter?
- Do I need to travel right now?
 - What could happen?
 - Is there any way I can postpone my travel?
- Is there anything on the property I should secure right now like lawn chairs or signage?
- Are there old or diseased trees around me with branches that could come down?
- What damages could I expect from a windstorm like this?

Reply YES to this notification when you have completed the above steps.

Note: Action is not required as this is a mock scenario. However, this is an opportunity to consider the steps you would take in the event of an emergency.

Mock Scenario Templates: *Isolated Technological Events*

Shelter in Place (Train Derailment)

Target Participant Groups: Town-wide - Residents, business community, municipal employees

RURAL READY MOCK EMERGENCY SCENARIO: SHELTER IN PLACE

You are receiving this notification because you have opted into *Rural Ready*, which is designed to promote emergency preparedness.

THIS IS NOT AN EMERGENCY

Situation: A train carrying hazardous materials has derailed south of your community and brought down local power lines with it. You've been asked to shelter in place while emergency responders complete a site assessment and secure the area. Highway X out of town has been cordoned off, and you can see fumes on the horizon.

What to consider:

- Where can I access more information about the situation as it evolves?
- What immediate concerns do I have with the power being down?
- Do I understand what 'shelter-in-place' means?

Reply YES to this notification when you have completed the above steps.

Note: You are not required to follow through with the shelter-in-place procedures. However, this is an opportunity to consider the steps you would take in the event of an emergency.

Information and Security Breach

Target Participant Groups: Municipal employees

RURAL READY MOCK EMERGENCY SCENARIO: AN INFORMATION AND SECURITY BREACH HAS OCCURRED FOR TOWN OFFICE FILES

You are receiving this notification because you have opted into *Rural Ready*, which is designed to promote emergency preparedness.

THIS IS NOT AN EMERGENCY

Situation: The Town Office has experienced an information and security breach, which will impact town services and may impact individuals/businesses whose information is stored at the Town Office.

What to consider:

- What potentially damaging personal/business information is stored at the Town Office?
- How can I mitigate the fall-out of this event on myself/business?
- Are there any passwords/information that I may need to change to protect myself/business?

Reply YES to this notification when you have completed the above steps.

Note: You are not required to follow through with the shelter-in-place procedures. However, this is an opportunity to consider the steps you would take in the event of an emergency.

Isolated Technological Events cont.

Loss of Cellular and Internet Service

Target Participant Groups: Town-wide - Residents, business community, municipal employees

RURAL READY MOCK EMERGENCY SCENARIO: SERVICE FROM A LARGE INTERNET PROVIDER HAS GONE DOWN NATION-WIDE

You are receiving this notification because you have opted into *Rural Ready*, which is designed to promote emergency preparedness.

THIS IS NOT AN EMERGENCY

Situation: The major service provider for the the community is experiencing a nation-wide disruption and service is down until further notice.

What to consider:

- How will this impact business function?
- Do I have an alternative way to source for information and communicating with people?
- Does this impact my place of work?

Reply YES to this notification when you have completed the above steps.

Note: This is an opportunity to consider the steps you would take in the event of an event like this one, no immediate action is required.

Potential Water Supply Contamination

Target Participant Groups: Municipal employees

RURAL READY MOCK EMERGENCY SCENARIO: FERTILIZER SPILL IS A POTENTIAL THREAT TO WATER SUPPLY

You are receiving this notification because you have opted into *Rural Ready*, which is designed to promote emergency preparedness.

THIS IS NOT AN EMERGENCY

Situation: A semi-trailer truck carrying agricultural fertilizer was in an accident on a transport route 2 km from your community. The truck is flipped on its side and large volumes of the fertilizer can be seen leaking from the cargo. Emergency crews are on site and have contacted the Town Office about a potential threat of water supply contamination.

What to consider:

- What are the next steps to address the potential contamination?
- How might you communicate the issue to concerned/affected residents?
- What would need to be done if the local water plant is affected?

Reply YES to this notification when you have completed the above steps.

Note: You are not required to take direct action. However, this is an opportunity to consider the steps you would take in the event of an emergency.

High Priority Climate Event	Consequences
<p>Wildfire</p>	<ul style="list-style-type: none"> • Evacuation and displacement • Poor air quality • Power outage • Loss/damage of critical structures • Loss of critical records • Insurance costs
<p>Water supply shortage</p>	<ul style="list-style-type: none"> • Stress on municipal water supply infrastructure • Increasing landscaping costs • Competing demands between residents, businesses, and town operations
<p>Flooding</p>	<ul style="list-style-type: none"> • Evacuation and displacement • Damage to critical structures • Loss of critical records • Power outage • Insurance costs • Infrastructure failure • Water contamination or disruption to supply • Road closures
<p>Freezing rain/ice storm</p>	<ul style="list-style-type: none"> • Power outages • Dangerous roads • Increased road maintenance • Injury and accidents
<p>Windstorm</p>	<ul style="list-style-type: none"> • Property damage • Power outage
Additional Climate Hazards	Consequences
<p>Invasive species</p>	<ul style="list-style-type: none"> • New dangerous animals (killer bees) • Crop destruction (grasshoppers, etc.) • Negative impact on forests (visual economic)
<p>Freeze-thaw cycles</p>	<ul style="list-style-type: none"> • Injuries to humans and wildlife • Infrastructure impacts - upheaval of sidewalks and streets • Increased road maintenance cost (sanding)
<p>Winter storm</p>	<ul style="list-style-type: none"> • Service delivery disruption • Access disruption to town (entry and exit) • Stress on emergency service personnel • Potential injuries (snow loading and accidents) • Damage and repair costs (snow loading)
<p>Dry soils</p>	<ul style="list-style-type: none"> • Building and infrastructure (including roads) failure / collapse • Damage / disruption to underground utilities
<p>Deterioration of wetlands</p>	<ul style="list-style-type: none"> • Increased water supply / infrastructure costs • Loss of natural water sources • Aesthetic / ecological impacts
<p>Heat wave</p>	<ul style="list-style-type: none"> • Public health impact, particularly for vulnerable populations (infants and elderly)
<p>Hailstorm</p>	<ul style="list-style-type: none"> • Damage to property (buildings and vehicles) • Damage to crops and gardens

About Resilient Rurals

Resilient Rurals began as a partnership between the towns of Bruderheim, Gibbons and Lamont for a regional climate adaptation and resilience project in Alberta's Industrial Heartland. It is a new approach—created by small towns, for small towns.

In 2015, the Town of Bruderheim was selected for participation in a one-day Climate Resilience Express workshop with All One Sky Foundation. The Town was provided with a Climate Resilient Action Plan that outlined a number of actions to promote resilience in a changing climate.

The plan was a unique opportunity—a launching point from which to build a regional collaborative framework with neighbouring municipalities of similar size (under 3,500) in Alberta's Industrial Heartland. The towns of Gibbons and Lamont agreed to partner with Bruderheim to form Resilient Rurals.

With Bruderheim as the project lead, the group identifies shared priority risks and opportunities for collaboration among partners, and creates climate education, communication and planning resources for rural communities.

Contact

Resilient Rurals
780-299-2946

www.ResilientRurals.com 

Connect@ResilientRurals.com 

[@ResilientRurals](https://www.facebook.com/ResilientRurals) 